

Series HW

American Air Filter / Enercon HW Series

Quality Components | Fast and Easy Replacement | Damage Protection



ADIRONDACK-AIRE HW CHASSIS SERIES

Replaces American Air Filter / Enercon HW Series

The Adirondack-Aire HW Series zerOzone chassis is a direct replacement for American Air Filter/ Enercon HW series ducted horizontal water source heat pump units. The HW is a complete unit that contains the compressor, blower, air side heat exchanger, water side heat exchanger, safety components, and control components. Low voltage wiring is compatible with the original wall thermostat. Duct connections are identical and line right up with the existing ductwork. A full range of unit sizes are available and each are dimensionally identical to the original for a fast, easy, and trouble-free installation.

Proven technology, quality components, careful design and testing and the latest in reliability and efficiency advances mean long unit life, user satisfaction, and lower energy costs. Consider the extensive list of standard features which includes: powder painted drain pan, refrigerant circuit access ports, high efficiency PSC blower motor and dynamically balanced DWDI blower wheel, evaporator freeze protection, water coil freezestat, high-pressure over protection, and lockout circuit. Adirondack-Aire is the replacement solution for upgrading old, worn out, inefficient original chassis. Heavy gauge mounting brackets and isolation grommets are provided. Cold Point Corp. backs the HW with a customer friendly one-year parts and labor warranty and five-year compressor warranty, (see Warranty document for details).

Standard Features:

- Made in the USA
- Powder painted drain pan
- Designed for easy installation and compatibility. Dimensionally identical to original American Air Filter / Enercon straight blow through design unit
- High efficiency copper tube-aluminum fin evaporator coil
- ETL approved
- High efficiency coaxial condenser coil with low water-side pressure drop
- Quiet, durable, and efficient compressor with built-in pressure and temperature protection
- DWDI centrifugal blower with high efficiency PSC motor
- Heavy gauge G90 galvanized steel construction
- High pressure switch
- Frost-free cooling
- Water coil freeze protection

Electrical Data

Model	Voltage Volt-Hz-Ph	Compressor		Fan		Total Amps	Ckt Amps	Max Fuse	Min Volts
		RLA	LRA	Amps	HP				
HW-09	208/230/60/1	3.7	22.0	0.4	1/10	4.1	5.0	15	197
HW-09	265/60/1	3.1	22.0	0.4	1/10	3.9	5.0	15	240
HW-12	208/230/60/1	4.7	25.0	0.4	1/10	5.1	7.0	15	197
HW-12	265/60/1	4.2	22.0	0.4	1/10	4.6	6.0	15	240
HW-20	208/230/60/1	7.4	33.0	1.2	1/5	8.6	11.0	15	197
HW-20	265/60/1	6.0	28.0	1.2	1/5	7.2	9.0	15	240
HW-26	208/230/60/1	7.4	43.0	2.7	1/3	8.6	13.0	20	197
HW-26	208/230/60/3	5.9	63.0	2.7	1/3	10.7	10.0	15	197
HW-26	265/60/1	6.7	46.0	0.9	1/3	7.6	10.0	15	240
HW-26	460/60/3	2.9	30.0	0.8	1/3	3.7	5.0	15	414
HW-33	208/230/60/1	11.6	74.0	2.7	1/3	14.3	18.0	25	197
HW-33	208/230/60/3	7.4	68.0	2.7	1/3	10.1	12.0	15	197
HW-33	265/60/1	9.9	67.0	1.9	1/3	11.8	15.0	20	240
HW-33	460/60/3	3.8	34.0	0.8	1/3	4.6	6.0	15	414
HW-40	208/230/60/1	13.6	88.0	2.7	1/3	16.3	20.0	30	197
HW-40	265/60/1	12.0	67.0	1.9	1/3	13.9	17.0	25	240
HW-40	208/230/60/3	8.6	70.0	2.7	1/3	11.3	14.0	20	197
HW-40	460/60/3	4.4	34.0	0.8	1/3	5.2	7.0	15	414
HW-51	208/230/60/1	17.9	102.0	3.4	1/2	21.3	26.0	40	197
HW-51	265/60/1	Consult Factory							
HW-51	208/230/60/3	11.3	88.0	3.4	1/2	14.7	18.0	25	197
HW-51	460/60/3	5.5	44.0	1.2	1/2	7.7	9.0	15	414
HW-55	208/230/60/1	17.9	102.0	3.4	1/2	21.3	26.0	40	197
HW-55	265/60/1	Consult Factory							
HW-55	208/230/60/3	11.3	88.0	3.4	1/2	14.7	18.0	25	197
HW-55	460/60/3	5.5	44.0	1.2	1/2	7.7	9.0	15	414



HW CHASSIS APPLICATION & BENEFITS

Fast and Easy Replacement

The Adirondack-Aire HW series zerOzone replacement chassis fit the existing space and ductwork without modifications.

Because the chassis dimensions are like the original, replacement work is fast and easy. The unit installs without the need for water loop shut down or draining. Water, drain, hanger bracket, ductwork, and electrical connections line right up to the original installation. Using Adirondack-Aire replacements eliminates the need for room

renovation, redecorating, ductwork and piping changes. The HW is the solution that gets your property back in service quickly and at the lowest total cost.

Damage Protection

The standard high-pressure switch and evaporator coil freeze protection stop unit operation before damage occurs, should airflow become reduced or obstructed due to dirty coils, obstructed airflow, motor failure or lock up. A freestat protects the water coil from freeze damage due to water temperature or flow problems. The water

coil is designed for low water-side pressure drop, eliminating potential pump sizing and water flow problems.

Options and Accessories

- 115V, 265/277V 1 ph, 208/230V 3ph, 460V 3ph (Availability varies by model size)
- Flow control valve
- Hose kits
- Unit-mounted filter

Performance Ratings*

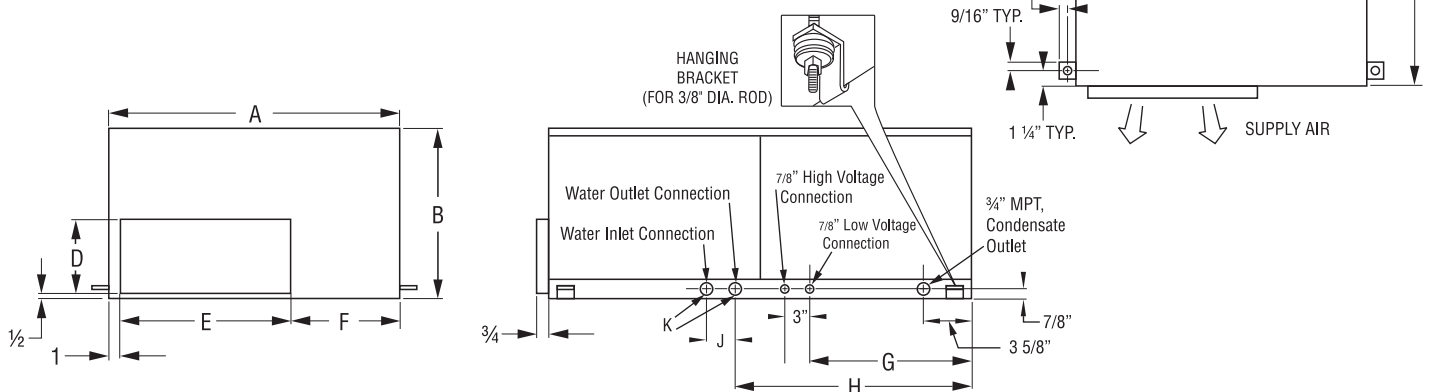
Model	Cooling			Heating		Water Coil		CFM		Refrigerant
	Btuh	Sens Btuh	EER	Heat Btuh	COP	GPM	Coil PD (Ft)	Rated	ESP.	
HW-09	9,900	8,200	13.7	11,500	4.5	2.5	1.8	420	0.10"	R-410A
HW-12	11,000	8,200	12.1	13,800	4.2	3.0	2.5	420	1.15"	R-410A
HW-20	18,400	13,400	13.4	23,500	4.4	5.0	4.0	665	0.20"	R-410A
HW-26	24,300	18,900	13.9	27,500	4.2	6.5	7.4	815	0.20"	R-410A
HW-33	31,900	21,800	12.8	40,000	4.3	8.3	4.0	1,280	0.30"	R-410A
HW-40	40,000	29,000	13.7	49,000	4.5	10.0	5.6	1,360	0.30"	R-410A
HW-51	51,000	41,000	14.5	60,000	4.5	12.5	7.2	1,600	0.40"	R-410A
HW-55	53,000	44,000	13.7	62,000	4.5	13.8	4.5	1,600	0.40"	R-410A

Continuous engineering improvements may result in performance changes without notice.

*115V, 208/230V 3ph, 265/277V, 460V 3ph (Availability varies by model size)

Unit Sizes

Model	A	B	C	D	E	F	G	H	J	K	Shipping Weight (lbs)
	Inches										
HW-09	20	12	30	5	11 1/2	7 1/2	8 3/8	17 1/4	2 3/8	1/2 FPT	120
HW-12	20	12	30	5	11 1/2	7 1/2	8 3/8	17 1/4	2 3/8	1/2 FPT	125
HW-20	25	16	35	6 1/2	14	10	13 5/8	21 3/8	2 3/8	1/2 FPT	175
HW-26	25	16	35	6 1/2	14	10	13 5/8	21 3/8	2 3/8	1/2 FPT	180
HW-33	30	18	40	8	19	10	16 1/8	24	2 5/8	3/4 FPT	245
HW-40	30	18	40	8	19	10	16 1/8	24	2 5/8	3/4 FPT	256
HW-51	36	20	44	12	21	14	18 7/8	26 3/4	2 5/8	3/4 FPT	310
HW-55	36	20	44	12	21	14	18 7/8	26 3/4	2 5/8	3/4 FPT	335



INNOVATIVE HEATING AND COOLING SOLUTIONS

Cold Point equipment has been specified in hundreds of projects in these and other applications:
Direct Replacement | New Construction | Renovation | Commercial & Residential Solutions

Cold Point values reliability as much as you

Your Cold Point sales representative knows their reputation is on the line with every sale. Therefore, they are as personally invested in your comfort as you are, and take great pride in creating your perfect indoor environment.

Rest comfortably, knowing Cold Point stands behind our products

The Cold Point Corporation backs our products with a standard warranty that includes labor for the entire first year of ownership. Registered Limited Warranty terms include: 12 month limited warranty on components, 60 month limited warranty on all unit compressors from the date of original installation OR 15 months limited warranty on components, 63 month limited warranty on all unit compressors from the date of original sale, whichever comes first. For all coverage options and complete coverage terms, check with your local Cold Point representative for full details.

Industry-leading expertise

Cold Point Corporation is the industry-leading supplier of aftermarket comfort solutions for commercial and residential applications. We have over 18 years of experience developing OEM-style replacement products to keep you happy and comfortable. Whether it is a water source heat pump application or an air source PTAC system, Cold Point has the knowledge and products to restore your system to its original operating condition.

Reliable comfort products backed by the industry experts in OEM-style replacement units

To learn more about how the Cold Point Corporation can help you save time and money on your next project, contact your local Cold Point representative. Call **315-339-2331** to speak with one of our specialists, or e-mail your request to info@coldpointcorp.com.

Your Cold Point Representative:



7500 Cold Point Dr • Rome, New York 13440

Phone (315) 339-2331 • Fax (315) 339-2358

www.ColdPointCorp.com

©2017 Cold Point Corp. All rights reserved.



rev. 07-17 CPL012